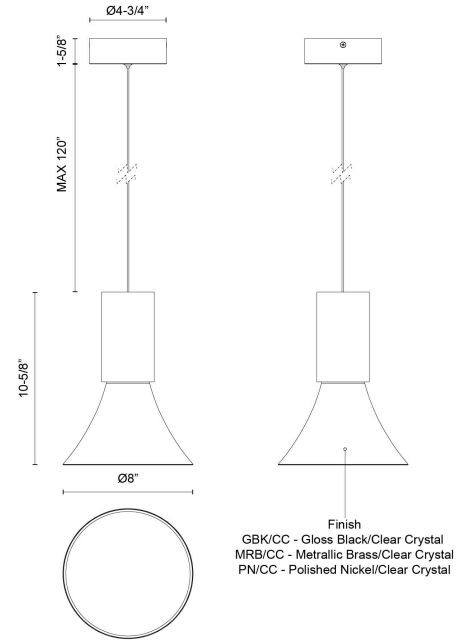


Floe 8-in Pendant

Model	Color Temperature	Wattage	Voltage	Total Lumens	Delivered Lumens	Dimmer Support (Optional, Not Included)
PD94108-UNV PD94108-GBK/CC-UNV PD94108-MRB/CC-UNV PD94108-PN/CC-UNV	3000K	13W	120-277V	1050lm	520lm* (GBK/CC) 585lm* (MRB/CC) 625lm* (PN/CC)	TRIAC/ELV



The Floe collection draws inspiration from the majestic beauty of glaciers, showcasing solid, sculptural forms. Crystal accents create the appearance of being encased in ice, lending a striking, frozen elegance to each pendant. Complemented by gracefully flared metalwork, Floe's silhouette exudes a natural, refined charm that enhances any modern space.



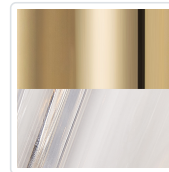
SPECIFICATION DETAILS

Fixture Dimensions	D8" x H10-5/8"
Canopy Dimensions	D4-3/4" x H1-5/8"
Minimum Hang Height	15"
Location	Dry
Diffuser Details	Frosted Acrylic Diffuser
Dimming Range	100% - 10%
Illumination Direction	Down
Light Source/Life	LED (50,000 hours) 90CRI
Material	Steel, Crystal
Slopped Ceiling Adaptable	Yes
Shade Details	Steel Shade
Wire Length	120"
Wire Style	Black Wire
Compliance	ETL Certified: Yes CEC Title 24: Yes

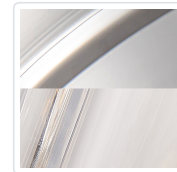
FINISHES



Glossy Black/Clear
Crystal
(GBK/CC)



Metallic
Brass/Clear
Crystal
(MRB/CC)



Polished
Nickel/Clear
Crystal
(PN/CC)

* For custom options, contact customer service.

* For warranty information, please visit www.kuzcolighting.com/warranty

WWW.KUZCOLIGHTING.COM

USA: 3035 E. LONE MOUNTAIN ROAD - LAS VEGAS, NV 89081

CANADA: 19054 28TH AVENUE - SURREY, BC V3Z 6M3